

# DOG

## PRODUCT COMPOSITION

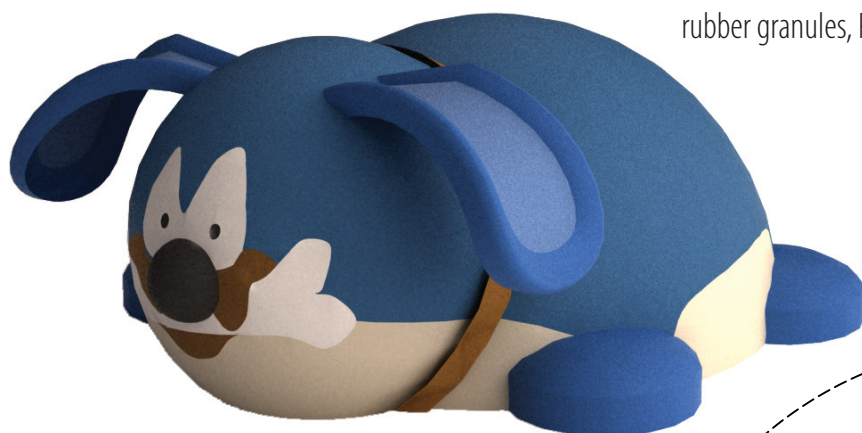
rubber granules, PUR binder, vandal-resistant fiberglass shell, metal parts

## COLOR COMBINATION

standard: blue / gray (other combinations on request)

## COLOR STABILITY

color may fade due to UV (up to level 3 on gray scale)



## SAFETY SURFACE

safety rubber surface in the area of 1500mm around the product (according to EN1177)

## PRODUCT SAFETY

certified according to EN1176

## INSTALLATION

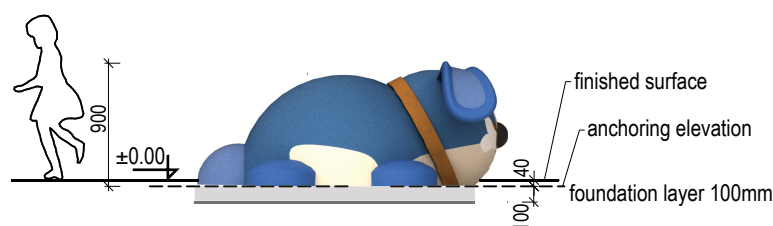
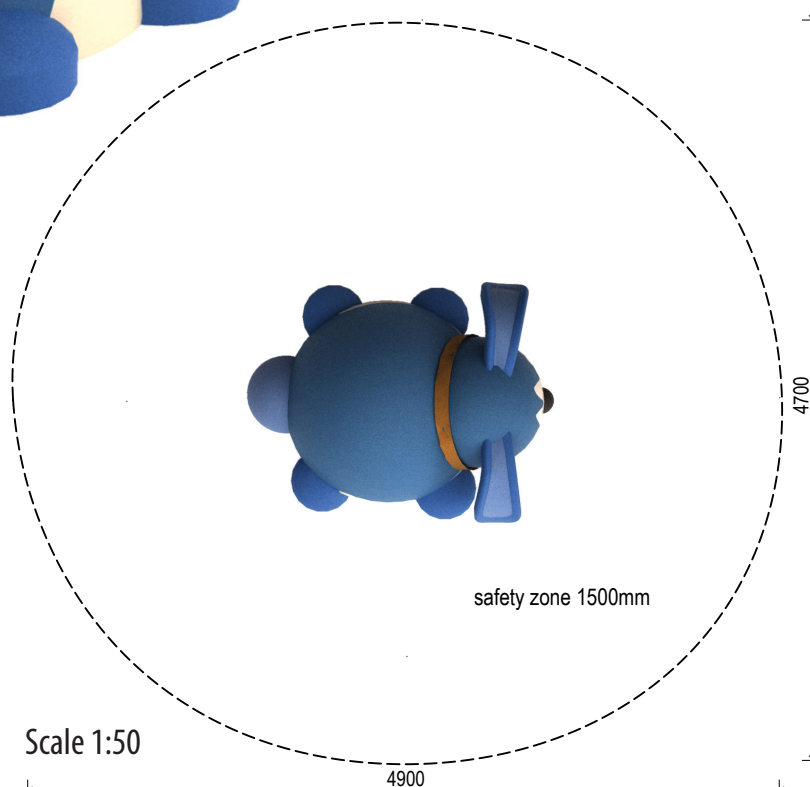
the product is installed onto a concrete foundation







## PACKAGING

wrapped in plastic and delivered on a pallet 1650 x 2100mm

## STORAGE

in original packaging on a pallet  
in temperatures between - 40° C and 50° C



 <b>180 kg</b>	 <b>900 mm</b>	 <b>1 hr</b>	 <b>2 - 8 yrs</b>	 <b>3</b>	 <b>1600 x 1800 x 900 mm</b>
weight	critical fall height	assembly time	users' age	max. number of users	dimensions

## 3D PROGRAM, s.r.o.

Nová 1073  
763 02 Zlín - Malenovice  
Czech Republic



MADE IN EU

[www.3dprogram.eu](http://www.3dprogram.eu)  
[info@3dprogram.eu](mailto:info@3dprogram.eu)

+420 602 500 045 +420 577 700 718

